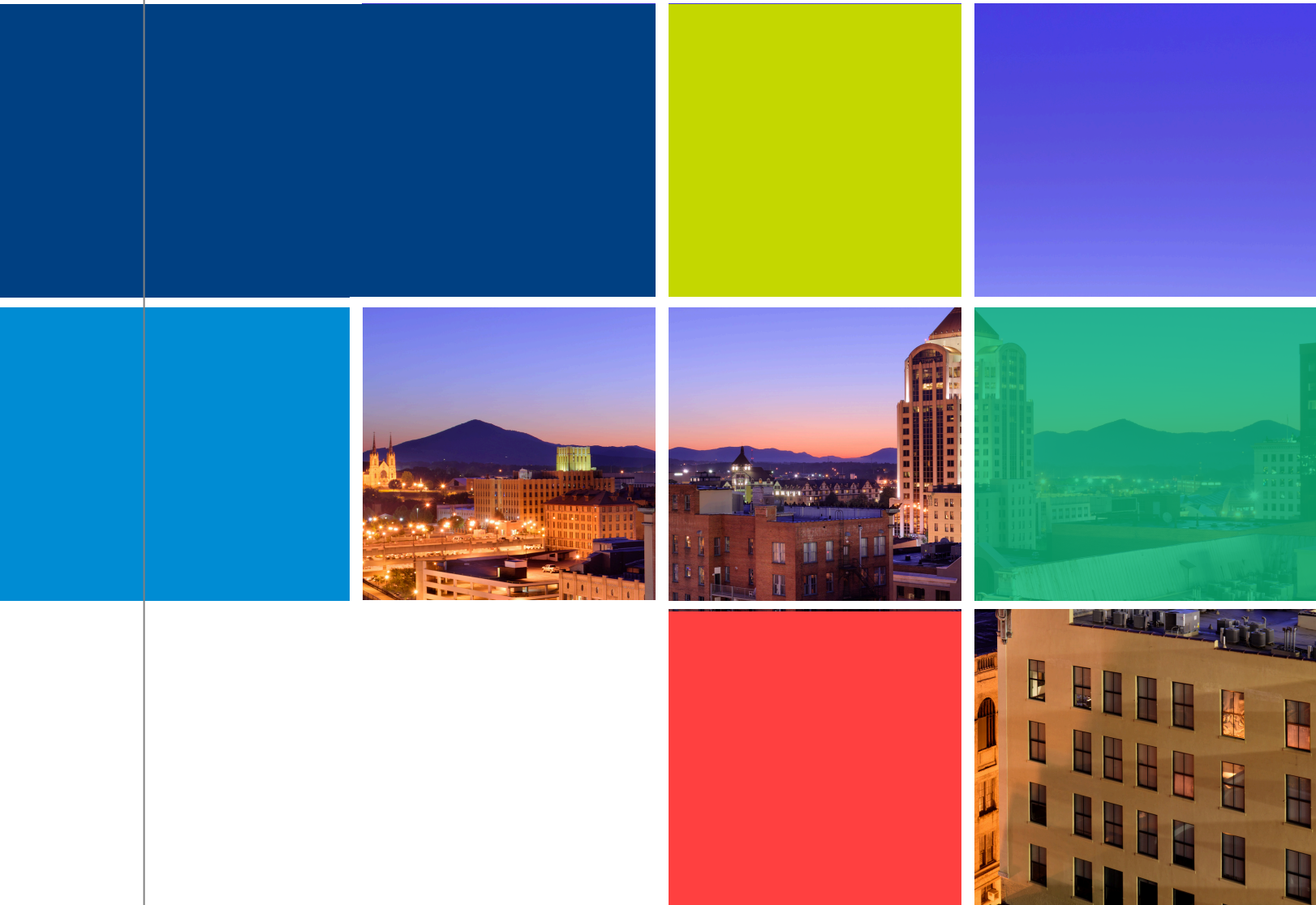


2024

# Point-in-Time Report

Blue Ridge Continuum of Care





---

# Contents

Blue Ridge Interagency Council on Homelessness	2
2024 Survey Team	3
About this Report	4
Methodology	5
Part One: Key Findings	6
Part Two: Supplemental Survey Data	10
Conclusion	13
Acknowledgements	15
Appendix A: Definition of Terms	16
Appendix B: 2024 Data Detail	18
Appendix C: Housing Inventory Count	27
Appendix D: Survey Instruments	29

# Blue Ridge Interagency Council on Homelessness

## CHAIR

Paula Prince, Ph.D., Radford University Carilion

## MEMBERS

Anne Marie Green, Council of Community Services  
Bill Duncan, Blue Ridge Independent Living Center  
Bryan Hill, Roanoke Valley - Alleghany Regional Commission  
Dave Prosser, Freedom First Credit Union  
David Bustamante, Roanoke Redevelopment & Housing Authority  
Hope Browning, City of Roanoke  
Isabel Thornton, Restoration Housing  
Jeff Doyle, Salem VAMC  
Judy Cusamano Smith, Radford University Carilion  
Judy Hough, Community Volunteer  
Kathleen Talbot, Blue Ridge Behavioral Healthcare  
Lee Clark, Rescue Mission of Roanoke  
Loretta Freeman, Church Women United  
Madeline Hanlon, Roanoke County  
Malora Horn, Roanoke City Public Schools  
Matt Crookshank, City of Roanoke  
Matthew Trantham, Captain, Salvation Army  
Paula Prince, Radford University Carilion  
Roy Hoza, Virginia Career Works-Blue Ridge  
Stacey Sheppard, Total Action for Progress



# 2024 Survey Team

Brian Bailey (Bradley Free Clinic)  
Hannah Evans (Blue Ridge Behavioral Healthcare)  
Jeff Doyle (Salem VAMC)  
Jerod Mabry (Bradley Free Clinic)  
Joe Cobb (Vice Mayor, City of Roanoke)  
John Van Balen (City of Roanoke HAT)  
Josh Guzman (City of Roanoke HAT)  
Josh Worth (City of Roanoke HAT)

Judy Smith (Roanoke University Carilion)  
Kate Donaldson (Salem VAMC)  
Lindsay Sheridan (Salem VAMC)  
Megan Cronise (Roanoke County)  
Paul Powell (Salem VAMC)  
Sam Coles (City of Roanoke HAT)  
Tameika Oliver (City of Roanoke HAT)  
Tamisha Trent (City of Roanoke HAT)  
Thomas Hard (Block by Block)

## Radford University Carilion Physician Assistant Students:

Alyssa Woodward  
Anna Wallace  
Bailey Bennett  
Colleen Peters  
Emily Ice  
Evan Benoit  
Felix Puthenpura  
Gabriella Ho

Jess Lee  
Jordyn Tompkins  
Josiah Mathieu  
Kat Apostolou  
Kaylee Barker  
Kinley Closius  
Kylee Unnoppet  
Leigh Maxwell  
Lindsay Crow

Lindsey Costello  
Mackenzie Tewksbury  
Maggie Murray  
Maura Doherty  
Rachel Betz  
Ryan Scanlon  
Tamnhu Bui  
Zach Irvin



# About this Report

Point-in-time (PIT) counts of sheltered and unsheltered people experiencing homelessness occur yearly in each jurisdiction in Virginia and across the country. This count offers a snapshot of homelessness on a single night and takes place in late January. The U.S. Department of Housing and Urban Development (HUD) requires communities to perform this task in order to qualify for federal homeless assistance funds. The Blue Ridge Interagency Council on Homelessness, the governance body for homeless services in the region, is the lead entity that conducts this PIT count.

The data collected provide valuable information to area service providers, policymakers, and the general public on the individual and family challenges and barriers associated with homelessness. Included data available for analysis are the number of people experiencing homelessness within particular populations, such as people with chronic patterns of homelessness, families with children, veterans experiencing homelessness, and young adults between the ages of 18 and 24 who are experiencing homelessness on their own, not in the company of their parent or guardian. Analyzing changes over time in the overall count and among certain populations of people experiencing homelessness is a strength of our data collection efforts.

Homelessness directly affects thousands of Virginians annually. According to the Annual Homeless Assessment Report (AHAR) to Congress published by the U.S. Department of Housing and Urban Development, in 2023 there were 6,761 homeless individuals in shelters in Virginia during a 24-hour count taken in January by localities statewide. This represents an increase of 3.6% over those counted in 2022.

---

# Methodology

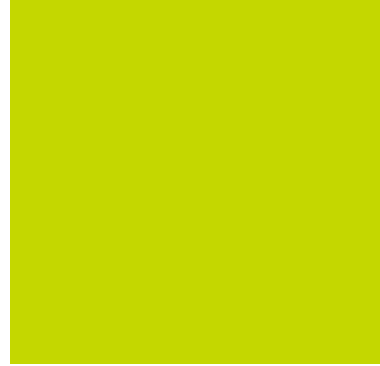
This 2024 Point-in-Time Count and Homeless Survey Report presents data obtained on a single night in January from sheltered and unsheltered people in the Blue Ridge Continuum of Care Region of Virginia: Alleghany County, Botetourt County, Craig County, Roanoke County, and the cities of Covington, Roanoke and Salem. The instrument used to collect data was a 35-question survey that was administered by staff from Continuum of Care partner organizations and community volunteers. The survey was administered voluntarily. Families with children were only surveyed once, as a household. Adults in households without children were surveyed individually.

This report also includes hard count and survey data obtained directly from the Homeless Management Information System (HMIS) for most programs. Data from the Homeless Management Information System can be pulled throughout the year and used by the community to analyze trends, assess needs, and evaluate system-level and program-level performance.

Individuals fleeing domestic violence were counted and surveyed by program caseworkers outside of the HMIS (N=64). These data were then aggregated with the overall count and other survey responses.

Data for individuals identified as unsheltered (N=76) were obtained and recorded on paper forms used by homeless service providers and community volunteers. Staff from the City of Roanoke's Homeless Assistance Team (HAT), the Salem VA Medical Center, and Radford University Carilion led seven street teams that visited encampment sites throughout the region. Volunteers from Radford University Carilion's Physician Assistant program, Bradley Free Clinic, Blue Ridge Behavioral Healthcare, Block by Block, and Greene Memorial United Methodist Church assisted with administering surveys for the street count. One additional street team was added to the unsheltered count process this year in an effort to reach encampment sites earlier in the morning before individuals left for the day.

This dedicated group searched the streets, under bridges, in doorways and other places to identify, count and interview unsheltered individuals. Surveys were also conducted by volunteers at the community's Empowerment Fair, which was held in conjunction with the PIT Count in an effort to increase the accuracy of the count and to connect individuals with resources. This helped ensure those who may have been missed during the early morning sweep were counted. The Empowerment Fair was held on January 25, 2024, the morning after the PIT Count.



# Part One: Key Findings

## All Homeless People:

- On January 24, 2024, 402 people were experiencing homelessness in the Roanoke Region. A majority, 81.1% (326), were staying in emergency shelters, and 18.9% (76) were in unsheltered locations.
- 16.9 percent (68) of people experiencing homelessness were children, 77.1% (310) were over the age of 24, and 6.0 percent (24) were between the ages of 18 and 24.
- Between 2023 and 2024, the number of people experiencing homelessness in the Roanoke Region (including Alleghany County) increased by 20.4% (334 in 2023 and 402 in 2024). Homelessness among people staying in unsheltered locations increased by 105% (37 in 2023 and 76 in 2024).
- The Roanoke Region's homelessness rate has decreased by 28.3% since 2012 (561 in 2012 and 402 in 2024).

## Homelessness by Household Type

- There were 293 people experiencing homelessness in adult-only households, accounting for 72.9% percent of the homeless population.
- There were 109 people in families with children experiencing homelessness, representing 27.1 percent of the homeless population. Of people in families with children, 62.4 percent (68) were children under the age of 18.
- Between 2023 (245) and 2024 (293), homelessness among individuals increased by 19.6 percent.
- Homelessness among people in families with children counted on a single night increased by 22.4% between 2023 (89) and 2024 (109).

## Homelessness by Subpopulation

- In January 2024, 18 Veterans were experiencing homelessness, representing a decrease of 40.0% over 2023 (30). All eighteen (18) veterans were homeless in households without children. Five veterans were chronically homeless, and two were unsheltered.
- There were 80 individuals in adult-only households with chronic patterns of homelessness. There were four families that included fourteen individuals who were identified as chronically homeless.



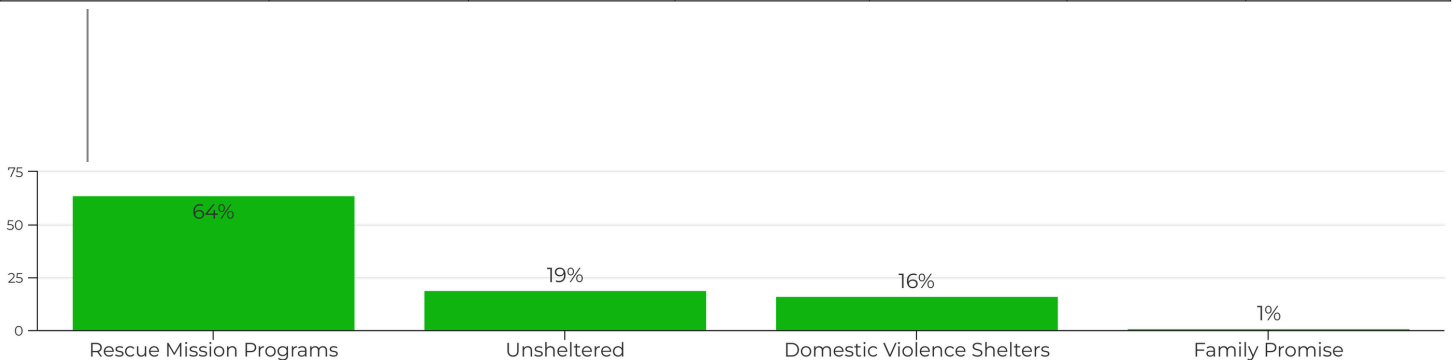
- Chronic homelessness increased by 64.9 percent between 2023 (57) and 2024 (94). Chronic homelessness has decreased by 36.9 percent since 2012 (149).
- There were 13 unaccompanied homeless youth between the ages of 18 and 24 counted in January 2024. Twelve of these youth were in adult-only households and three of the thirteen individuals were unsheltered. There was one homeless youth in a parenting youth household.

## Point in Time Count by Program

The chart below shows the number of individuals and families counted and sorted by the programs and agencies that served them when the count was conducted on January 24, 2024. The Roanoke Rescue Mission is the largest emergency shelter provider in the Blue Ridge Continuum of Care. Sixty-four percent (256) of the homeless population (402) counted on the 2024 PIT night were sheltered at the Rescue Mission. This is a lower percentage than in previous years. Prior to the COVID-19 pandemic, the Mission had seventy-nine percent (252 of 319) of the individuals identified on the 2019 PIT Count night.

### PIT Data by Program – Night of January 24, 2024

Program	Number of individuals in families	Number of individuals in households without children	Number of veterans	Number of chronically homeless	Number of youth	Total number of individuals
Family Promise Housing for Families with Children	5	0	0	0	0	5
Rescue Mission ALL Shelters	48	208	15	64	9	256
Safe Home Systems	0	0	0	0	0	0
TAP DVS	43	4	0	1	0	47
Turning Point	13	4	0	3	1	17
Alleghany CSB Outreach	0	1	0	0	0	1
Unsheltered	0	76	3	26	3	76
<b>Totals</b>	<b>109</b>	<b>293</b>	<b>18</b>	<b>94</b>	<b>13</b>	<b>402</b>



## **Trends Over Time: 2012 to 2024**

In 2012, the Blue Ridge Continuum of Care (CoC) began a transformation of its service system that included changes in strategies to more effectively reduce homelessness. Based on national research, the new strategies focused on providing targeted homelessness prevention services and rapidly re-housing those who found themselves in a homeless condition and then providing them with tailored supportive services needed for them to maintain housing stability in the long term. The CoC implemented the Housing First model in its housing programs and targeted its Permanent Supportive Housing (PSH) resources to those experiencing chronic homelessness who are most in need of intensive supportive services. Also in 2012, the community began matching households to resources more efficiently through standardized processes, which are components of an ongoing effort by the Blue Ridge Interagency Council on Homelessness and the Continuum of Care to improve service provision and effectiveness. Between 2012 and 2024, the number of people experiencing homelessness has been reduced by 28.3% from 561 to 402.

Even though the overall homeless count has decreased over the last twelve years, recent trends reflect the challenges facing our community. This year represents the second consecutive year of an overall increase. Last year's increase of 54% was the largest single-year increase recorded in the region.

### **Trends in Veteran Homelessness**

The number of veterans experiencing homelessness in 2024 decreased by 40.0% in the past year and has declined by 75.0% since 2012. Initiatives such as Michelle Obama's Mayors Challenge to End Veteran Homelessness in 2014 and Roanoke's participation brought additional attention and expanded resources to ending homelessness among the veteran population. Resources available for Veterans, including the HUD-VASH program, continue to be well-funded and expanded. In 2024, 18 veterans were counted, 2 were unsheltered, and 5 were identified as chronically homeless.

### **Trends in Chronic Homelessness**

In 2024 there were 94 chronically homeless individuals counted. Chronic homelessness refers to an individual or family where the head of household has a disability and has been continuously homeless for a year or more or has experienced at least four episodes of homelessness in the last three years where the combined length of time homeless was at least 12 months. Chronic homelessness is challenging in that individuals and families in this category typically have severe mental illness, substance use disorder or other underlying barriers that have resulted in their homelessness and that require intense service interventions. Reducing chronic homelessness has been a priority for the Blue Ridge Continuum of Care. New strategies and targeted resources have been introduced as part of the systems transformation begun in 2012. One such strategy is use the of a "by-name" list where case managers from a variety of service providers come together on a regular basis to identify the needs of the chronically homeless and to prioritize housing placements utilizing objective scoring tools designed to measure vulnerability and level of service needs. Individuals with the most severe needs are prioritized for housing and services first.

## Trends in Family Homelessness

The impact of rapid re-housing strategies on families has been well researched and proven effective. The Family Options Study published by HUD in 2015 showed that rapid re-housing reduced episodes of homelessness in emergency shelters and that both housing subsidies and rapid re-housing services were cost effective. Over the period of 2012 to 2024, the Blue Ridge Continuum of Care's efforts to reduce family homelessness through rapid re-housing housing and other interventions have proved to be both cost and program effective. Since 2012, the number of people in families with children has declined by 17.4% over the same period (from 132 in 2012 to 109 in 2024).



# Part Two: Supplemental Data Detail



Median Age: 47  
Mean Age: 48



**Foster Care History:**  
Yes: 22%  
No: 78%



**Mental Health Condition:**  
Yes: 62%  
No: 38%



**31%**

**Homeless Due to Eviction**



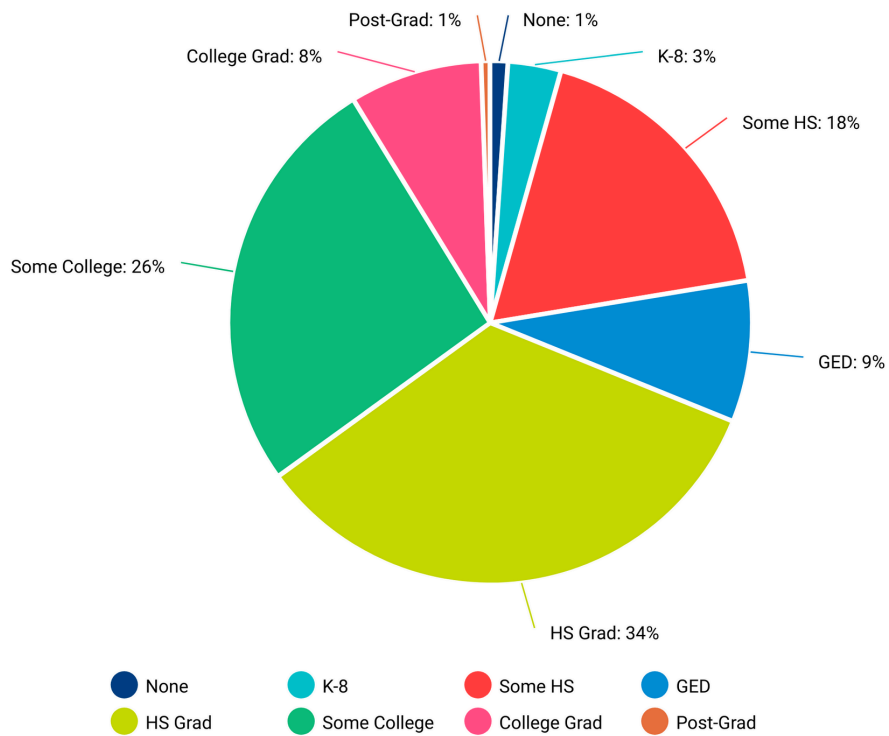
**Substance Use:**  
Alcohol: 2%  
Drugs & Alcohol: 13%  
Drugs: 18%

**History of Incarceration:**  
Yes: 31%  
No: 69%

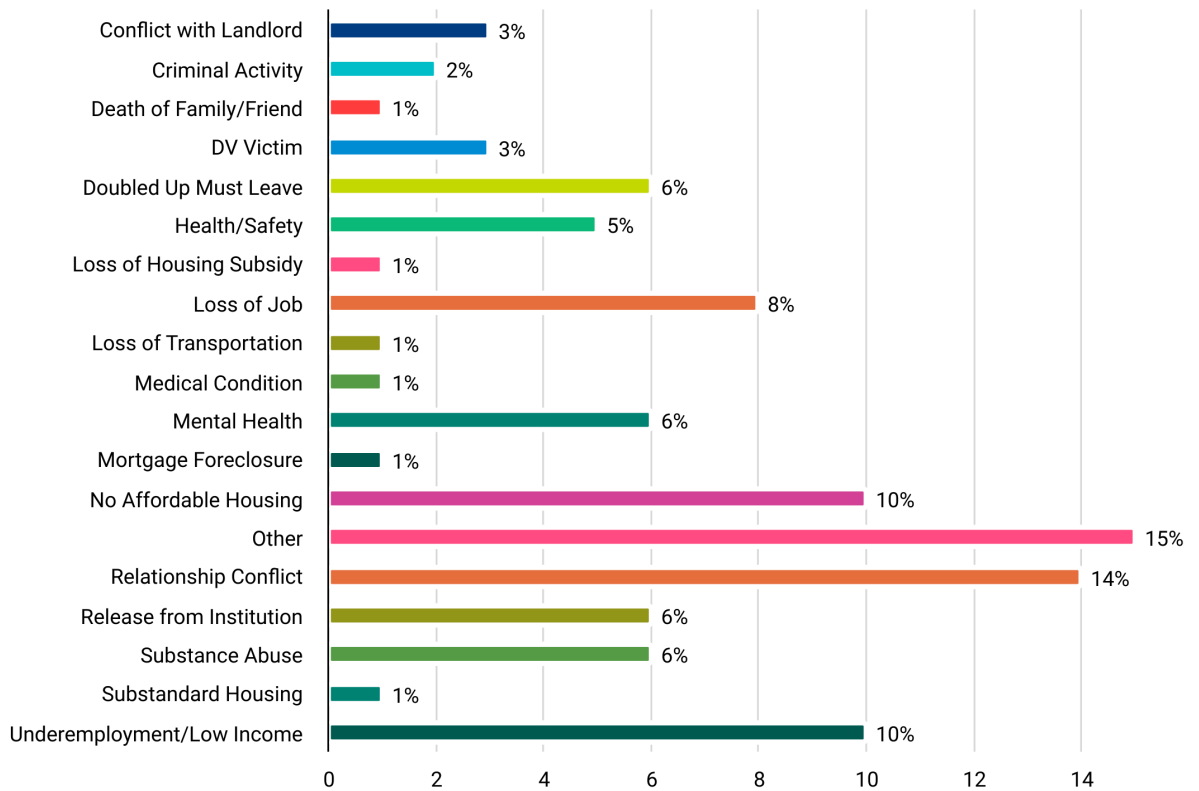


**Domestic Violence Victim:**  
Yes: 30%  
No: 70%

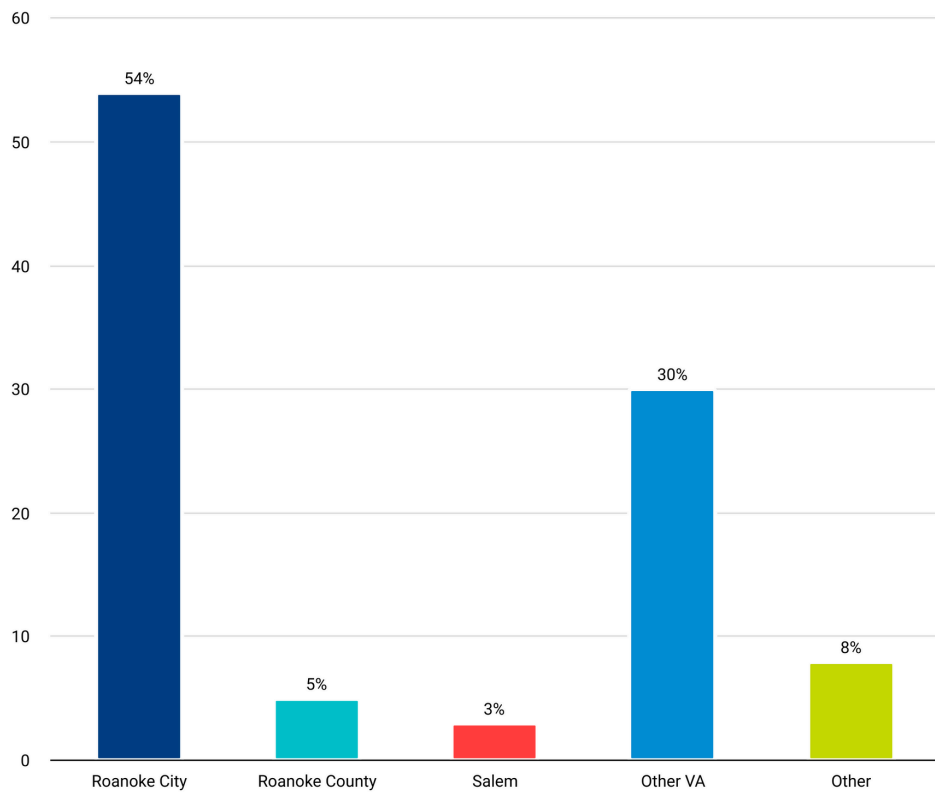




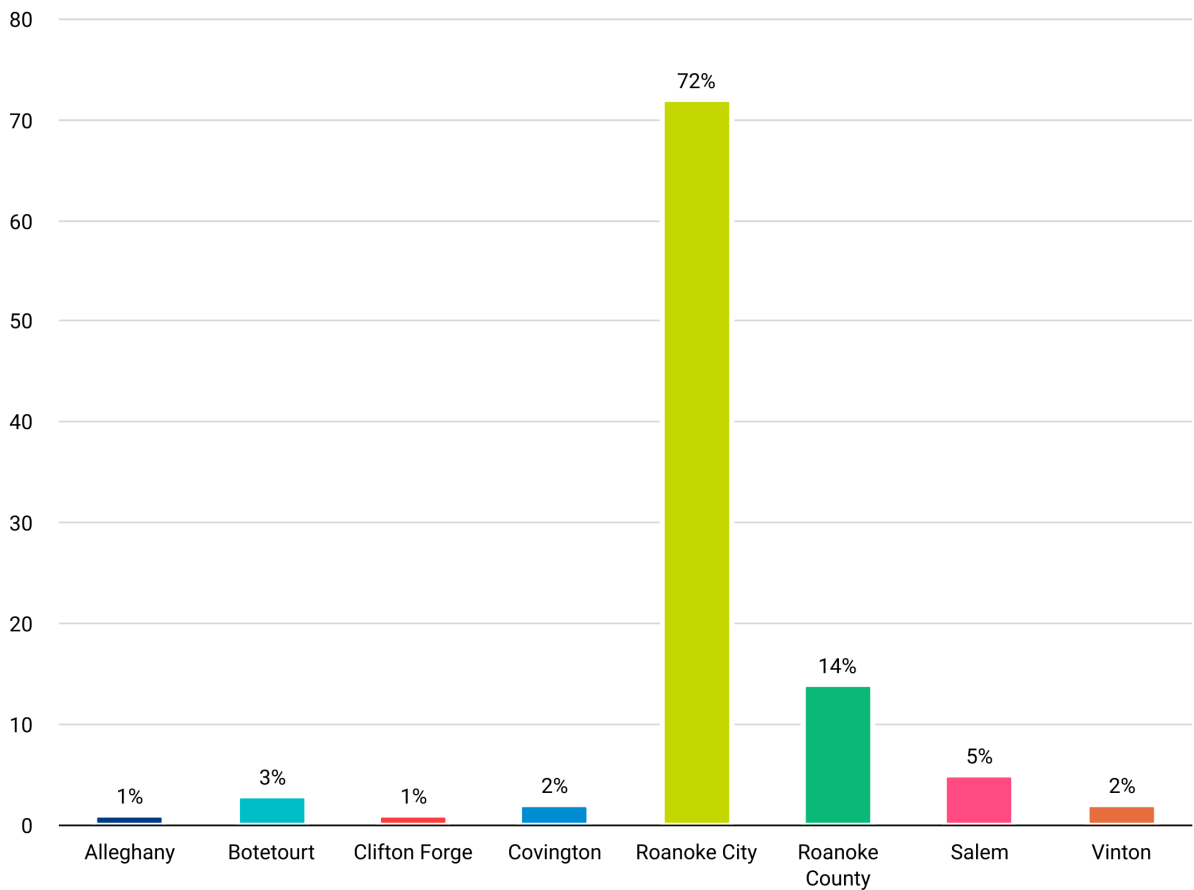
## Education Level



## Primary Reason for Homelessness



**Last Location Before Current Episode of Homelessness**



**Homelessness within the Blue Ridge CoC**

# Conclusion

This year's increase of 20.4% marks the second consecutive year of an overall increase in homelessness in the region. Last year's 54% increase was the largest single-year increase since the Point-in-Time (PIT) Count process began in 2009. The trend in increasing unsheltered numbers is also continuing. This year's unsheltered count increased by 105% over last year.

This substantial increase in the unsheltered count can likely be partially attributed to an increase in the accuracy of the street count. An additional outreach team was added to our unsheltered count this year to catch individuals at encampment sites earlier in the morning, before they left their sites for the day. Conducting PIT surveys at our annual Resource Fair has also likely increased the accuracy of the unsheltered count. It cannot be discounted that other factors – including economic and lack of affordable housing – are also contributing to the unsheltered and overall increases. The number of individuals counted in places not meant for human habitation has increased by 406% since 2019 (15).

Chronic homelessness increased by nearly 65% this year. This number is consistent with other metrics identified in our service system, including increasing lengths of stay in our shelter programs and increasing numbers of individuals with severe underlying conditions that have contributed to their loss of housing.

There was also a significant increase in households accessing services through our domestic violence shelter programs this year. Sixty-four (64) individuals were counted in these programs this year. This is a 56% increase over the number of individuals counted in these programs last year (41).

Economic factors including inflation, rising rental costs and the lack of affordable housing in the region are likely the primary drivers of these increases. Increases in requests for domestic violence services has also been a consistent trend in our community since the beginning of the COVID-19 pandemic in 2019. Unfortunately, these trends are continuing and are impacting the number of households experiencing homelessness and housing instability in our region. Until the underlying issues are addressed, these trends are likely to continue. More affordable housing in the region is desperately needed. Increased resources for mental health and substance use treatment are necessary. Policy solutions to expand housing development and



---

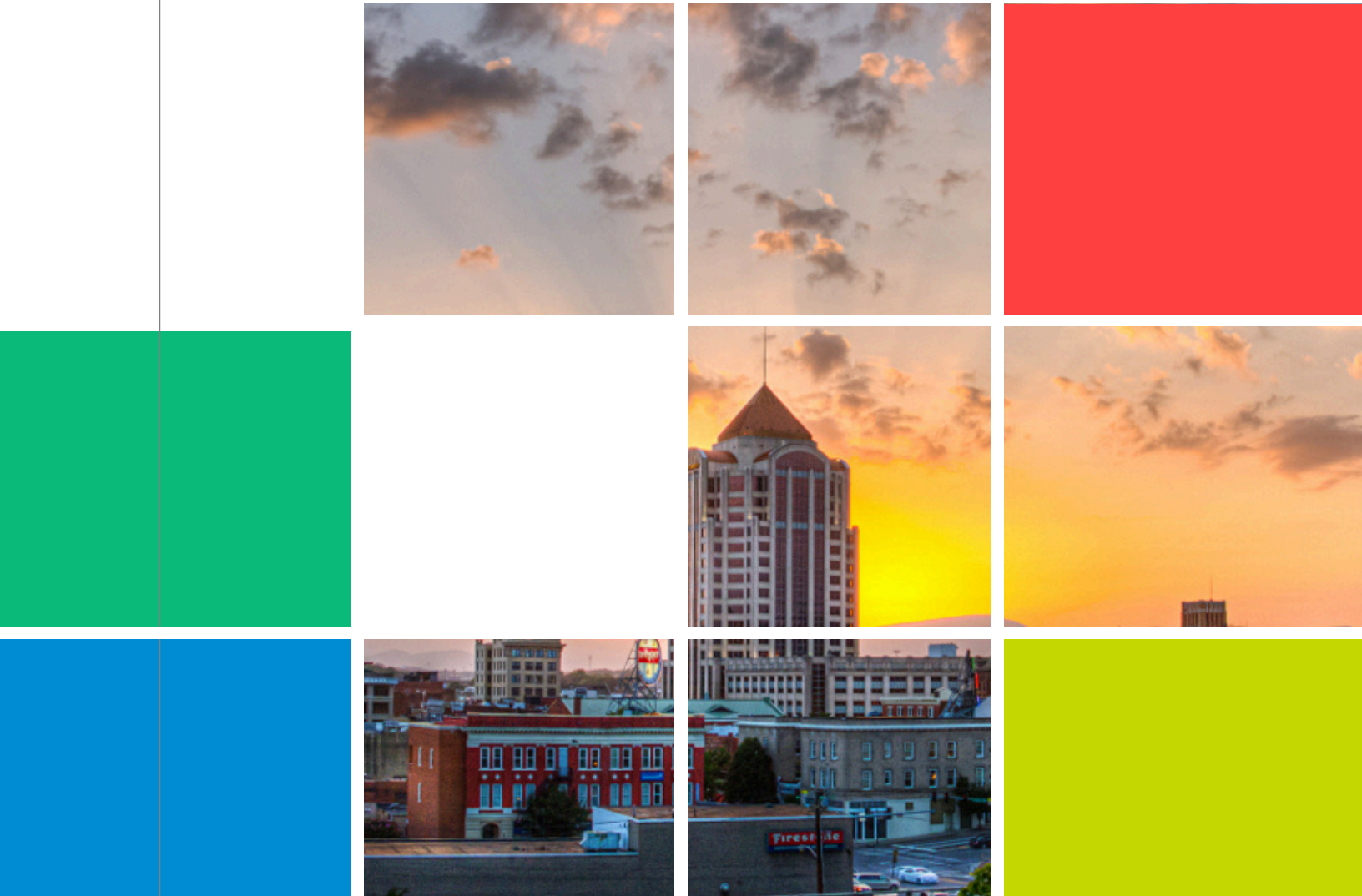
increased funding for housing vouchers are solutions that will make sustainable progress possible.

Despite the significant increased numbers seen this year, there is progress to report. This year's homeless Veteran count decreased by 40% to 18 total Veterans. This decrease is likely the result of continued and substantial Federal investment in resources for homeless and at-risk Veterans. The HUD-VASH Permanent Supportive Housing program has been well-funded and expanded in recent years. The Supportive Services for Veteran Families (SSVF) programs is also well-funded and targets critical resources to Veterans experiencing housing instability. The success of these programs is evidence that well-funded programs have a real impact.

Another positive metric is the increasing number of individuals exiting homelessness to permanent housing and the decreasing percentage of individuals returning to homelessness from housing. Through the end of April 2024, in the current fiscal year, 274 individuals have exited homelessness to permanent housing. This is an 18% increase over the number of individuals exiting to housing during the same period last year.

While the number of individuals exiting our system to housing is increasing, the rate at which individuals are returning to homelessness is decreasing. The percentage of individuals returning to homelessness over a two year period after exiting to permanent housing has decreased from 21.12% last year to 16.06% this year. This decrease is likely the result of our service system increasing access to housing vouchers that provide long-term rental assistance and to the community supports individuals need to maintain housing once it is obtained. The challenge facing our community is more new individuals are entering our service system than are able to exit successfully. The systemic solutions mentioned previously are needed to reverse this trend.





# Acknowledgements

Matthew Crookshank, Chair, Blue Ridge Continuum of Care

Paula Prince, Chair, Blue Ridge Interagency Council on Homelessness

## AUTHOR

Matthew Crookshank

## DATA COLLECTORS & ANALYSTS

Ben Bristoll

Brian Burnette

Alison Jorgensen

## REPORT DESIGN

Alison Jorgensen

# Appendix A:

## Definition of Terms

**Chronically Homeless Individual** refers to an individual with a disability who has been continuously homeless for one year or more or has experienced at least four episodes of homelessness in the last three years where the combined length of time homeless in those occasions is at least 12 months.

**Chronically Homeless People in Families** refers to people in families in which the head of household has a disability and has either been continuously homeless for one year or more or has experienced at least four episodes of homelessness in the last three years where the combined length of time homeless on those occasions is at least 12 months.

**Continuums of Care (CoC)** are local planning bodies responsible for coordinating the full range of homelessness services in a geographic area, which may cover a city, county, metropolitan area, or an entire state.

**Emergency Shelter** is a facility with the primary purpose of providing temporary shelter for homeless people.

**Homeless** describes a person who lacks a fixed, regular, and adequate nighttime residence.

**Individual** refers to a person who is not part of a family with children during an episode of homelessness. Individuals may be homeless as single adults, unaccompanied youth, or in multiple-adult or multiple-child households.

**Other Permanent Housing** is housing with or without services that are specifically for formerly homeless people, but that does not require people to have a disability.

**Parenting Youth** are people under the age of 25 who are the parents or legal guardians of one or more children (under age 18) who are present with or sleeping in the same place as that youth parent, where there is no person over age 24 in the household.

**Parenting Youth Household** is a household with at least one parenting youth and the child or children for whom the parenting youth is the parent or legal guardian.

**Permanent Supportive Housing (PSH)** is a program designed to provide formerly homeless people with long-term housing (project—and tenant-based) and supportive services. HUD McKinney-Vento-funded programs require that the client have a disability for program eligibility, so the majority of people in PSH have disabilities

**People in Families with Children** are people who are homeless as part of households that have at least one adult (age 18 and older) and one child (under age 18).

**Point-in-Time Counts** are unduplicated 1-night estimates of both sheltered and unsheltered homeless populations. The 1-night counts are conducted by Continuums of Care nationwide and occur during the last week in January of each year.

**Safe Havens** are projects that provide private or semi-private long-term housing for people with severe mental illness and are limited to serving no more than 25 people within a facility. People in safe havens are included in the 1-night PIT count but, at this time, are not included in the 1-year shelter count.

**Sheltered Homelessness** refers to people who are staying in emergency shelters, transitional housing programs, or safe havens.

**Rapid Rehousing (RRH)** is a housing model designed to provide temporary housing assistance to people experiencing homelessness, moving them quickly out of homelessness and into permanent housing.

**Transitional Housing Programs** provide people experiencing homelessness a place to stay combined with supportive services for up to 24 months.

**Unaccompanied Youth (under 18)** are people who are not part of a family with children or accompanied by their parent or guardian during their episode of homelessness and who are under the age of 18.

**Unaccompanied Youth (18 to 24)** are people who are not part of a family with children or accompanied by their parent or guardian during their episode of homelessness, and who are between the ages of 18 and 24.

**Unsheltered Homelessness** refers to people whose primary nighttime residence is a public or private place not designated for, or ordinarily used as, regular sleeping accommodation for people (for example, the streets, vehicles, or parks).

**Veteran** refers to any person who served on active duty in the armed forces of the United States. This includes Reserves and National Guard members who were called up to active duty.

# Appendix B: 2024 Data Detail

<b>Households with at Least One Adult and One Child</b>					
	<b>Sheltered ES</b>	<b>Unsheltered</b>	<b>2024 Total</b>	<b>2023 Total</b>	<b>% Change</b>
Total number of households	47	0	47	33	42%
Total number of persons	109	0	109	89	22%
Number of children (under age 18)	68	0	68	53	28%
Number of youth (age 18 to 24)	11	0	11	36	14%
Number of adults (age 25 to 34)	14	0	14		
Number of adults (age 35 to 44)	13	0	13		
Number of adults (age 45 to 54)	2	0	2		
Number of adults (age 55 to 64)	0	0	0		
Number of adults (age 65 or older)	1	0	1		
<b>Gender (adults and children)</b>	<b>Sheltered ES</b>	<b>Unsheltered</b>	<b>2024 Total</b>	<b>2023 Total</b>	
Woman (Girl if child)	63	0	63	59	
Man (Boy if child)	46	0	46	30	
Culturally Specific Identity	0	0	0	0	
Transgender	0	0	0	0	
Non-Binary	0	0	0	0	
Questioning	0	0	0	0	
Different Identity	0	0	0	0	
More Than One Gender	0	0	0	0	
<i>Of those that selected More Than One Gender, how many people reported gender identities that:</i>					
Includes Woman (Girl if child)	0	0	0	0	
Includes Man (Boy if child)	0	0	0	0	
Includes Culturally Specific Identity	0	0	0	0	
Includes Transgender	0	0	0	0	
Includes Non-Binary	0	0	0	0	
Includes Questioning	0	0	0	0	
Includes Different Identity	0	0	0	0	
<b>Race and Ethnicity (adults and children)</b>	<b>Sheltered ES</b>	<b>Unsheltered</b>	<b>2024 Total</b>	<b>2023 Total</b>	
American Indian, Alaska Native, or Indigenous	0	0	0	0	
American Indian, Alaska Native, or Indigenous & Hispanic/Latina/e/o	0	0	0	0	
Asian or Asian American	0	0	0	0	
Asian or Asian American & Hispanic/Latina/e/o	0	0	0	0	
Black, African American, or African	60	0	60	20	
Black, African American, or African & Hispanic/Latina/e/o	0	0	0	0	
Hispanic/Latina/e/o	10	0	10	17	
Middle Eastern or North African	0	0	0	0	
Middle Eastern or North African & Hispanic/Latina/e/o	0	0	0	0	
Native Hawaiian or Pacific Islander	0	0	0	0	
Native Hawaiian or Pacific Islander & Hispanic/Latina/e/o	0	0	0	0	
White	35	0	35	59	
White & Hispanic/Latina/e/o	0	0	0	0	
Multi-Racial & Hispanic/Latina/e/o	0	0	0	0	
Multi-Racial (not Hispanic/Latina/e/o)	4	0	4	9	
<b>Chronically Homeless</b>	<b>Sheltered ES</b>	<b>Unsheltered</b>	<b>2024 Total</b>	<b>2023 Total</b>	<b>% Change</b>
Total number of households	4	0	4	1	400%
Total number of persons	14	0	14	2	700%

<b>Households without Children</b>					
<i>Note: All Households without Children enrolled in Rescue Mission Shelter Program</i>					
	<b>Sheltered ES</b>	<b>Unsheltered</b>	<b>2024 Total</b>	<b>2023 Total</b>	<b>% Change</b>
Total number of households	217	76	293	245	20%
Total number of persons	217	76	293	245	20%
Number of youth (age 18 to 24)	10	3	13	14	-7%
Number of adults (age 25 to 34)	36	7	43	178	-53%
Number of adults (age 35 to 44)	33	30	63		
Number of adults (age 45 to 54)	37	17	54		
Number of adults (age 55 to 64)	82	9	91		
Number of adults (age 65 or older)	19	2	21		
Data Not Collected	0	8	8	0	-
<b>Gender (only adults)</b>	<b>Sheltered ES</b>	<b>Unsheltered</b>	<b>2024 Total</b>	<b>2023 Total</b>	
Woman (Girl if child)	70	18	88	75	
Man (Boy if child)	146	55	201	165	
Culturally Specific Identity	0	0	0	0	
Transgender	0	2	2	3	
Non-Binary	0	1	1	2	
Questioning	0	0	0	0	
Different Identity	0	0	0	0	
More Than One Gender	1	0	1	0	
<i>Of those that selected More Than One Gender, how many people reported gender identities that:</i>					
Includes Woman (Girl if child)	1	0	1	0	
Includes Man (Boy if child)	0	0	0	0	
Includes Culturally Specific Identity	0	0	0	0	
Includes Transgender	1	0	1	0	
Includes Non-Binary	0	0	0	0	
Includes Questioning	0	0	0	0	
Includes Different Identity	0	0	0	0	
<b>Race and Ethnicity (only adults)</b>	<b>Sheltered ES</b>	<b>Unsheltered</b>	<b>2024 Total</b>	<b>2023 Total</b>	
American Indian, Alaska Native, or Indigenous	0	4	4	2	
American Indian, Alaska Native, or Indigenous & Hispanic/Latina/e/o	0	1	1	0	
Asian or Asian American	3	0	3	1	
Asian or Asian American & Hispanic/Latina/e/o	0	0	0	0	
Black, African American, or African	75	12	87	85	
Black, African American, or African & Hispanic/Latina/e/o	0	0	0	0	
Hispanic/Latina/e/o	2	0	2	6	
Middle Eastern or North African	2	1	3	0	
Middle Eastern or North African & Hispanic/Latina/e/o	0	0	0	0	
Native Hawaiian or Pacific Islander	0	0	0	0	
Native Hawaiian or Pacific Islander & Hispanic/Latina/e/o	0	0	0	0	
White	126	46	172	149	
White & Hispanic/Latina/e/o	2	0	2	0	
Multi-Racial & Hispanic/Latina/e/o	0	0	0	0	
Multi-Racial (not Hispanic/Latina/e/o)	3	1	4	4	
Client Doesn't Know/Prefers Not to Answer	1	1	2	0	
Missing Information	3	10	13	4	
<b>Chronically Homeless</b>	<b>Sheltered ES</b>	<b>Unsheltered</b>	<b>2024 Total</b>	<b>2023 Total</b>	<b>% Change</b>
Total number of persons	54	26	80	55	45%

<b>Households with Only Children (under age 18)</b>					
	<b>Sheltered ES</b>	<b>Unsheltered</b>	<b>2024 Total</b>	<b>2023 Total</b>	<b>% Change</b>
Total number of households	0	0	0	0	-
Number of children (under age 18)	0	0	0	0	-
<b>Gender (children only)</b>	<b>Sheltered ES</b>	<b>Unsheltered</b>	<b>2024 Total</b>	<b>2023 Total</b>	
Woman (Girl if child)	0	0	0	0	
Man (Boy if child)	0	0	0	0	
Culturally Specific Identity	0	0	0	0	
Transgender	0	0	0	0	
Non-Binary	0	0	0	0	
Questioning	0	0	0	0	
Different Identity	0	0	0	0	
More Than One Gender	0	0	0	0	
<i>Of those that selected More Than One Gender, how many people reported gender identities that:</i>					
Includes Woman (Girl if child)	0	0	0	0	
Includes Man (Boy if child)	0	0	0	0	
Includes Culturally Specific Identity	0	0	0	0	
Includes Transgender	0	0	0	0	
Includes Non-Binary	0	0	0	0	
Includes Questioning	0	0	0	0	
Includes Different Identity	0	0	0	0	
<b>Race and Ethnicity (children only)</b>	<b>Sheltered ES</b>	<b>Unsheltered</b>	<b>2024 Total</b>	<b>2023 Total</b>	
American Indian, Alaska Native, or Indigenous	0	0	0	0	
American Indian, Alaska Native, or Indigenous & Hispanic/Latina/e/o	0	0	0	0	
Asian or Asian American	0	0	0	0	
Asian or Asian American & Hispanic/Latina/e/o	0	0	0	0	
Black, African American, or African	0	0	0	0	
Black, African American, or African & Hispanic/Latina/e/o	0	0	0	0	
Hispanic/Latina/e/o	0	0	0	0	
Middle Eastern or North African	0	0	0	0	
Middle Eastern or North African & Hispanic/Latina/e/o	0	0	0	0	
Native Hawaiian or Pacific Islander	0	0	0	0	
Native Hawaiian or Pacific Islander & Hispanic/Latina/e/o	0	0	0	0	
White	0	0	0	0	
White & Hispanic/Latina/e/o	0	0	0	0	
Multi-Racial & Hispanic/Latina/e/o	0	0	0	0	
Multi-Racial (not Hispanic/Latina/e/o)	0	0	0	0	
<b>Chronically Homeless</b>	<b>Sheltered ES</b>	<b>Unsheltered</b>	<b>2024 Total</b>	<b>2023 Total</b>	<b>% Change</b>
Total number of persons	0	0	0	0	-

<b>Veteran Households with at Least One Adult and One Child</b>					
	<b>Sheltered ES</b>	<b>Unsheltered</b>	<b>2024 Total</b>	<b>2023 Total</b>	<b>% Change</b>
Total number of households	0	0	0	0	-
Total number of persons	0	0	0	0	-
Total number of veterans	0	0	0	0	-
<b>Gender (veterans only)</b>	<b>Sheltered ES</b>	<b>Unsheltered</b>	<b>2024 Total</b>	<b>2023 Total</b>	
Woman (Girl if child)	0	0	0	0	
Man (Boy if child)	0	0	0	0	
Culturally Specific Identity	0	0	0	0	
Transgender	0	0	0	0	
Non-Binary	0	0	0	0	
Questioning	0	0	0	0	
Different Identity	0	0	0	0	
More Than One Gender	0	0	0	0	
<i>Of those that selected More Than One Gender, how many people reported gender identities that:</i>					
Includes Woman (Girl if child)	0	0	0	0	
Includes Man (Boy if child)	0	0	0	0	
Includes Culturally Specific Identity	0	0	0	0	
Includes Transgender	0	0	0	0	
Includes Non-Binary	0	0	0	0	
Includes Questioning	0	0	0	0	
Includes Different Identity	0	0	0	0	
<b>Race and Ethnicity (veterans only)</b>	<b>Sheltered ES</b>	<b>Unsheltered</b>	<b>2024 Total</b>	<b>2023 Total</b>	
American Indian, Alaska Native, or Indigenous	0	0	0	0	
American Indian, Alaska Native, or Indigenous & Hispanic/Latina/e/o	0	0	0	0	
Asian or Asian American	0	0	0	0	
Asian or Asian American & Hispanic/Latina/e/o	0	0	0	0	
Black, African American, or African	0	0	0	0	
Black, African American, or African & Hispanic/Latina/e/o	0	0	0	0	
Hispanic/Latina/e/o	0	0	0	0	
Middle Eastern or North African	0	0	0	0	
Middle Eastern or North African & Hispanic/Latina/e/o	0	0	0	0	
Native Hawaiian or Pacific Islander	0	0	0	0	
Native Hawaiian or Pacific Islander & Hispanic/Latina/e/o	0	0	0	0	
White	0	0	0	0	
White & Hispanic/Latina/e/o	0	0	0	0	
Multi-Racial & Hispanic/Latina/e/o	0	0	0	0	
Multi-Racial (not Hispanic/Latina/e/o)	0	0	0	0	
<b>Chronically Homeless (Veteran Households)</b>	<b>Sheltered ES</b>	<b>Unsheltered</b>	<b>2024 Total</b>	<b>2023 Total</b>	<b>% Change</b>
Total number of households	0	0	0	0	-
Total number of persons	0	0	0	0	-



<b>Veteran Households without Children</b>					
	<b>Sheltered ES</b>	<b>Unsheltered</b>	<b>2024 Total</b>	<b>2023 Total</b>	<b>% Change</b>
Total number of households	15	3	18	30	-40%
Total number of persons	15	3	18	30	-40%
Total number of veterans	15	3	18	30	-40%
<b>Gender (veterans only)</b>	<b>Sheltered ES</b>	<b>Unsheltered</b>	<b>2024 Total</b>	<b>2023 Total</b>	
Woman (Girl if child)	2	0	2	5	
Man (Boy if child)	13	3	16	24	
Culturally Specific Identity	0	0	0	0	
Transgender	0	0	0	1	
Non-Binary	0	0	0	0	
Questioning	0	0	0	0	
Different Identity	0	0	0	0	
More Than One Gender	0	0	0	0	
<i>Of those that selected More Than One Gender, how many people reported gender identities that:</i>					
Includes Woman (Girl if child)	0	0	0	0	
Includes Man (Boy if child)	0	0	0	0	
Includes Culturally Specific Identity	0	0	0	0	
Includes Transgender	0	0	0	0	
Includes Non-Binary	0	0	0	0	
Includes Questioning	0	0	0	0	
Includes Different Identity	0	0	0	0	
<b>Race and Ethnicity (veterans only)</b>	<b>Sheltered ES</b>	<b>Unsheltered</b>	<b>2024 Total</b>	<b>2023 Total</b>	
American Indian, Alaska Native, or Indigenous	0	0	0	1	
American Indian, Alaska Native, or Indigenous & Hispanic/Latina/e/o	0	0	0	0	
Asian or Asian American	0	0	0	0	
Asian or Asian American & Hispanic/Latina/e/o	0	0	0	0	
Black, African American, or African	7	0	7	12	
Black, African American, or African & Hispanic/Latina/e/o	0	0	0	0	
Hispanic/Latina/e/o	0	0	0	2	
Middle Eastern or North African	0	0	0	0	
Middle Eastern or North African & Hispanic/Latina/e/o	0	0	0	0	
Native Hawaiian or Pacific Islander	0	0	0	0	
Native Hawaiian or Pacific Islander & Hispanic/Latina/e/o	0	0	0	0	
White	8	2	10	15	
White & Hispanic/Latina/e/o	0	0	0	0	
Multi-Racial & Hispanic/Latina/e/o	0	0	0	0	
Multi-Racial (not Hispanic/Latina/e/o)	0	0	0	0	
Data Not Collected	0	1	1	0	
<b>Chronically Homeless (Veteran Households)</b>	<b>Sheltered ES</b>	<b>Unsheltered</b>	<b>2024 Total</b>	<b>2023 Total</b>	<b>% Change</b>
Total number of persons	3	2	5	11	-45%

<b>Unaccompanied Youth Households</b>					
	<b>Sheltered ES</b>	<b>Unsheltered</b>	<b>2024 Total</b>	<b>2023 Total</b>	<b>% Change</b>
Total number of unaccompanied youth households	9	3	12	16	-25%
Total number of unaccompanied youth	9	3	12	16	-25%
Number of unaccompanied children (under age 18)	0	0	0	0	-
Number of unaccompanied young adults (age 18-24)	9	3	12	16	-25%
<b>Gender (unaccompanied youth)</b>	<b>Sheltered ES</b>	<b>Unsheltered</b>	<b>2024 Total</b>	<b>2023 Total</b>	
Woman (Girl if child)	4	2	6	9	
Man (Boy if child)	4	1	5	6	
Culturally Specific Identity	0	0	0	0	
Transgender	0	0	0	1	
Non-Binary	0	0	0	0	
Questioning	0	0	0	0	
Different Identity	0	0	0	0	
More Than One Gender	1	0	1	0	
<i>Of those that selected More Than One Gender, how many people reported gender identities that:</i>					
Includes Woman (Girl if child)	1	0	1	0	
Includes Man (Boy if child)	0	0	0	0	
Includes Culturally Specific Identity	0	0	0	0	
Includes Transgender	1	0	1	0	
Includes Non-Binary	0	0	0	0	
Includes Questioning	0	0	0	0	
Includes Different Identity	0	0	0	0	
<b>Race and Ethnicity (unaccompanied youth)</b>	<b>Sheltered ES</b>	<b>Unsheltered</b>	<b>2024 Total</b>	<b>2023 Total</b>	
American Indian, Alaska Native, or Indigenous	0	0	0	1	
American Indian, Alaska Native, or Indigenous & Hispanic/Latina/e/o	0	0	0	0	
Asian or Asian American	0	0	0	0	
Asian or Asian American & Hispanic/Latina/e/o	0	0	0	0	
Black, African American, or African	3	0	3	5	
Black, African American, or African & Hispanic/Latina/e/o	0	0	0	0	
Hispanic/Latina/e/o	0	0	0	0	
Middle Eastern or North African	0	0	0	0	
Middle Eastern or North African & Hispanic/Latina/e/o	0	0	0	0	
Native Hawaiian or Pacific Islander	0	0	0	0	
Native Hawaiian or Pacific Islander & Hispanic/Latina/e/o	0	0	0	0	
White	5	3	8	10	
White & Hispanic/Latina/e/o	0	0	0	0	
Multi-Racial & Hispanic/Latina/e/o	0	0	0	0	
Multi-Racial (not Hispanic/Latina/e/o)	1	0	1	1	
<b>Chronically Homeless (unaccompanied youth)</b>	<b>Sheltered ES</b>	<b>Unsheltered</b>	<b>2024 Total</b>	<b>2023 Total</b>	<b>% Change</b>
Total number of persons	2	2	4	1	400%

<b>Parenting Youth Households</b>					
	<b>Sheltered ES</b>	<b>Unsheltered</b>	<b>2024 Total</b>	<b>2023 Total</b>	<b>% Change</b>
Total number of parenting youth households	1	0	1	2	-50%
Total number of persons in parenting youth households	2	0	2	5	-60%
Total Parenting Youth (youth parents only)	1	0	1	2	-50%
Total Children in Parenting Youth Households	1	0	1	3	-67%
Number of parenting youth under age 18	0	0	0	0	-
Children in households with parenting youth under age 18	0	0	0	0	-
Number of parenting youth age 18 to 24	1	0	1	2	-50%
Children in households with parenting youth age 18 to 24	1	0	1	3	-67%
<b>Gender (youth parents only)</b>	<b>Sheltered ES</b>	<b>Unsheltered</b>	<b>2024 Total</b>	<b>2023 Total</b>	
Woman (Girl if child)	1	0	1	2	
Man (Boy if child)	0	0	0	0	
Culturally Specific Identity	0	0	0	0	
Transgender	0	0	0	0	
Non-Binary	0	0	0	0	
Questioning	0	0	0	0	
Different Identity	0	0	0	0	
More Than One Gender	0	0	0	0	
<i>Of those that selected More Than One Gender, how many people reported gender identities that:</i>					
Includes Woman (Girl if child)	0	0	0	0	
Includes Man (Boy if child)	0	0	0	0	
Includes Culturally Specific Identity	0	0	0	0	
Includes Transgender	0	0	0	0	
Includes Non-Binary	0	0	0	0	
Includes Questioning	0	0	0	0	
Includes Different Identity	0	0	0	0	
<b>Race and Ethnicity (youth parents only)</b>	<b>Sheltered ES</b>	<b>Unsheltered</b>	<b>2024 Total</b>	<b>2023 Total</b>	
American Indian, Alaska Native, or Indigenous	0	0	0	0	
American Indian, Alaska Native, or Indigenous & Hispanic/Latina/e/o	0	0	0	0	
Asian or Asian American	0	0	0	0	
Asian or Asian American & Hispanic/Latina/e/o	0	0	0	0	
Black, African American, or African	1	0	1	0	
Black, African American, or African & Hispanic/Latina/e/o	0	0	0	0	
Hispanic/Latina/e/o	0	0	0	0	
Middle Eastern or North African	0	0	0	0	
Middle Eastern or North African & Hispanic/Latina/e/o	0	0	0	0	
Native Hawaiian or Pacific Islander	0	0	0	0	
Native Hawaiian or Pacific Islander & Hispanic/Latina/e/o	0	0	0	0	
White	0	0	0	2	
White & Hispanic/Latina/e/o	0	0	0	0	
Multi-Racial & Hispanic/Latina/e/o	0	0	0	0	
Multi-Racial (not Hispanic/Latina/e/o)	0	0	0	0	
<b>Chronically Homeless (parenting youth households)</b>	<b>Sheltered ES</b>	<b>Unsheltered</b>	<b>2024 Total</b>	<b>2023 Total</b>	<b>% Change</b>
Total number of households	0	0	0	0	-
Total number of persons	0	0	0	0	-

<b>HOMELESS SUBPOPULATIONS</b>				
<b>Additional Homeless Populations</b>	<b>Sheltered ES</b>	<b>Unsheltered</b>	<b>2024 Total</b>	<b>2023 Total</b>
Adults with a Serious Mental Illness	76	24	100	99
Adults with a Substance Use Disorder	37	20	57	62
Adults with HIV/AIDS	0	1	1	3
Adult Survivors of Domestic Violence (optional)	45	6	51	38

# Appendix C: Housing Inventory Count

Project Type	Organization Name	Project Name	Bed Type	Target Pop.	Veteran Beds HH w/ Children	Youth Beds HH w/ Children	CH Beds HH w/ Children	Veteran Beds HH w/o Children	Youth Beds HH w/o Children	CH Beds HH w/o Children	CH Beds HH w/ only Children	Year-Round Beds	Total Seasonal Beds	Overflow Beds	PIT Count	Total Beds	Utilization Rate
PSH	Commonwealth Catholic Charities	Healing Haven		NA	0	0	0	0	0	31	0	31	0	0	16	31	52%
PSH	Commonwealth Catholic Charities	Heroes Haven		NA	0	0	0	7	0	7	0	7	0	0	5	7	71%
RRH	Council of Community Services	City of Roanoke ESG		NA	0	0	0	0	0	0	0	9	0	0	9	9	100%
RRH	Council of Community Services	DHCD - VHSP		NA	0	0	0	0	0	0	0	14	0	0	14	14	100%
RRH	Council of Community Services	Virginia Housing Trust Fund - RRH		NA	0	0	0	0	0	0	0	4	0	0	4	4	100%
ES	Family Promise of Greater Roanoke	Housing for Families with Children	Other beds	NA	0	0	0	0	0	0	0	10	0	0	5	10	50%
ES	Rescue Mission of Roanoke	Rescue Mission - (Entry Prog	Facility-based	NA	0	0	0	0	0	0	0	323	0	0	256	323	79%
PSH	Salem Veteran Affairs Medical Center	HUD-VASH		NA	18	0	0	86	0	0	0	104	0	0	104	104	100%
ES	Salvation Army	Turning Point	Facility-based	DV	0	0	0	0	0	0	0	17	0	0	17	17	100%
ES	Total Action for Progress	DV Services - Emergency Shelter	Facility-based	DV	0	0	0	0	0	0	0	47	0	0	47	47	100%
RRH	Total Action for Progress	Shallow Subsidy		NA	16	0	0	11	0	0	0	27	0	0	27	27	100%
RRH	Total Action for Progress	Supportive Services for Veteran Families		NA	19	0	0	21	0	0	0	40	0	0	40	40	100%
					<b>Sum : 53</b>	<b>Sum : 0</b>	<b>Sum : 0</b>	<b>Sum : 125</b>	<b>Sum : 0</b>	<b>Sum : 38</b>	<b>Sum : 0</b>	<b>Sum : 633</b>	<b>Sum : 0</b>	<b>Sum : 0</b>	<b>Sum : 544</b>	<b>Sum : 633</b>	

# Appendix D: Survey Instruments

# 2024 Winter Point-In-Time Count Survey

## Interviewer Section

<b>Interviewer Name:</b> _____	<b>Interviewer Role:</b> <input type="checkbox"/> Volunteer <input type="checkbox"/> Team <input type="checkbox"/> Staff <input type="checkbox"/> Other: _____
<b>Assessment Date:</b> ____ / ____ / ____	<b>Assessment Location:</b> _____
<b>Assessment Time:</b> ____ : ____ AM ____ : ____ PM	<input type="checkbox"/> Roanoke City <input type="checkbox"/> Roanoke County/Vinton <input type="checkbox"/> Salem <input type="checkbox"/> Botetourt <input type="checkbox"/> Craig County <input type="checkbox"/> Clifton Forge <input type="checkbox"/> Covington <input type="checkbox"/> Alleghany County

### Survey Start

“Hello, my name is \_\_\_\_ and I’m a volunteer for the Blue Ridge Continuum of Care. We are conducting a survey to count homeless people and provide better programs and services. Your participation is voluntary, and your name and identifying information will not be shared with anyone outside of our team. You do not need to share your name or social security number if you are uncomfortable. I need to read each question all the way through. Can I have about 10 minutes of your time?”

<b>Do you consent to participate in this survey?</b>	<input type="checkbox"/> No <input type="checkbox"/> Yes <b>If “No”, end of survey.</b>
<b>Have you already completed this survey this week?</b>	<input type="checkbox"/> No <input type="checkbox"/> Yes <b>If “Yes”, end of survey.</b>
<b>In what type of place did you sleep on the night of January 24<sup>th</sup>, 2024?</b>  <i>(if not a homeless living situation, then end of survey)</i>	<b>Unsheltered Homeless Living Situations</b> <input type="checkbox"/> Street or Sidewalk <input type="checkbox"/> Vehicle (car, van, RV, truck) <input type="checkbox"/> Park <input type="checkbox"/> Abandoned Building <input type="checkbox"/> Bus or Train Station, Airport <input type="checkbox"/> Under Bridge/Overpass <input type="checkbox"/> Woods or Outdoor Encampment <input type="checkbox"/> Other Type of Place Not Meant for Human Habitation (specify): _____  <b>Sheltered Homeless Living Situations</b> <input type="checkbox"/> Emergency Shelter <input type="checkbox"/> Safe Haven  <div style="background-color: yellow; text-align: center; padding: 2px;">----- End of Survey if one of the following: -----</div> <b>Institutional Living Situations</b> <input type="checkbox"/> Jail, Hospital, or Treatment Program <b>Permanent Living Situations</b> <input type="checkbox"/> Hotel/Motel (self-paid), Apartment, or House <input type="checkbox"/> Doesn't Know <input type="checkbox"/> Declined to answer
<b>In what specific location did you sleep on the night of January 24<sup>th</sup> 2024, if willing to share?</b>	<input type="checkbox"/> Declined to answer

### Demographic Section *(included in client’s HMIS profile page)*

<b>Social Security Number</b>	_____ - ____ - _____ <input type="checkbox"/> Full SSN <input type="checkbox"/> Partial SSN <input type="checkbox"/> Doesn't Know <input type="checkbox"/> Declined
<b>Name</b>	<b>First:</b> _____  <b>Middle:</b> _____  <b>Last:</b> _____ <input type="checkbox"/> Full Name <input type="checkbox"/> Partial / Code Name <input type="checkbox"/> Doesn't Know <input type="checkbox"/> Declined
<b>Date of Birth</b> <i>(month/day/year)</i>	____ / ____ / ____ <input type="checkbox"/> Full DOB <input type="checkbox"/> Partial DOB <input type="checkbox"/> Doesn't Know <input type="checkbox"/> Declined
<b>Pronouns</b>	<input type="checkbox"/> She/Her/Hers <input type="checkbox"/> He/Him/His <input type="checkbox"/> They/Them/Theirs <input type="checkbox"/> None (use name only) <input type="checkbox"/> Doesn't Know <input type="checkbox"/> Declined to answer <input type="checkbox"/> Custom: _____
<b>Gender</b> <i>(check <b>all</b> that apply)</i>	<input type="checkbox"/> Woman (Girl, if child) <input type="checkbox"/> Man (Boy, if child) <input type="checkbox"/> Transgender <input type="checkbox"/> Culturally Specific Identity (e.g., Two-Spirit) <input type="checkbox"/> Doesn't Know <input type="checkbox"/> Non-Binary <input type="checkbox"/> Questioning <input type="checkbox"/> Declined to answer <input type="checkbox"/> Different Identity: _____



<b>Sexual Orientation</b>	<input type="checkbox"/> Heterosexual <input type="checkbox"/> Gay <input type="checkbox"/> Lesbian <input type="checkbox"/> Bisexual <input type="checkbox"/> Questioning <input type="checkbox"/> Other: _____ <input type="checkbox"/> Doesn't Know <input type="checkbox"/> Declined to answer
<b>Race and Ethnicity</b> <i>(check <u>all</u> that apply)</i>	<input type="checkbox"/> American Indian, Alaska Native, or Indigenous <input type="checkbox"/> Asian <input type="checkbox"/> Black <input type="checkbox"/> Hispanic/Latina/e/o <input type="checkbox"/> Middle Eastern or North African <input type="checkbox"/> Native Hawaiian or Pacific Islander <input type="checkbox"/> White <input type="checkbox"/> Declined
<b>Highest level of education attained</b>	<input type="checkbox"/> None <input type="checkbox"/> K-8 <input type="checkbox"/> Some High School <input type="checkbox"/> High School Grad <input type="checkbox"/> GED <input type="checkbox"/> Some College (incl. technical/community college) <input type="checkbox"/> College Graduate <input type="checkbox"/> Post Graduate <input type="checkbox"/> Declined to answer
<b>How many dependent children do you have with you?</b>	_____ <input type="checkbox"/> Declined to answer
<b>Have you ever served in the U.S. Military?</b>	<input type="checkbox"/> No <input type="checkbox"/> Yes <input type="checkbox"/> Declined to answer
<b>If yes, were you in combat?</b>	<input type="checkbox"/> No <input type="checkbox"/> Yes <input type="checkbox"/> Declined to answer
<b>If yes, what was the character of your discharge?</b>	<input type="checkbox"/> Honorable <input type="checkbox"/> Other than Honorable <input type="checkbox"/> Bad Conduct <input type="checkbox"/> Dishonorable <input type="checkbox"/> Uncharacterized <input type="checkbox"/> Declined to answer
<b>Have you ever been in foster care?</b>	<input type="checkbox"/> No <input type="checkbox"/> Yes <input type="checkbox"/> Declined to answer
<b>Have you ever been in jail?</b>	<input type="checkbox"/> No <input type="checkbox"/> Yes <input type="checkbox"/> Declined to answer
<b>Have you ever been in prison?</b>	<input type="checkbox"/> No <input type="checkbox"/> Yes <input type="checkbox"/> Declined to answer

**Housing Section**

<b>In which locality did you live prior to becoming homeless?</b> <i>(If other, please specify City and State)</i>	<input type="checkbox"/> Roanoke City <input type="checkbox"/> Roanoke County/Vinton <input type="checkbox"/> Salem <input type="checkbox"/> Botetourt <input type="checkbox"/> Craig County <input type="checkbox"/> Clifton Forge <input type="checkbox"/> Covington <input type="checkbox"/> Alleghany County <input type="checkbox"/> Other: _____ <input type="checkbox"/> Declined
<b>If you moved here from another locality, why did you move to this area?</b>	_____
<b>ZIP code of last permanent address</b> <i>(also, please check the type of ZIP code)</i>	_____ <input type="checkbox"/> Full <input type="checkbox"/> Partial <input type="checkbox"/> Doesn't Know <input type="checkbox"/> Declined to answer
<b>Approximate date current homelessness started?</b>	_____ / _____ / _____ <input type="checkbox"/> Doesn't Know <input type="checkbox"/> Declined to answer
<b>Number of times literally homeless in the past 3 years?</b>	_____ <input type="checkbox"/> Doesn't Know <input type="checkbox"/> Declined to answer
<b>Total number of months homeless in the past 3 years?</b>	_____ <input type="checkbox"/> Doesn't Know <input type="checkbox"/> Declined to answer
<b>Did eviction lead to your current episode of homelessness?</b>	<input type="checkbox"/> No <input type="checkbox"/> Yes <input type="checkbox"/> Doesn't Know <input type="checkbox"/> Declined to answer
<b>Primary reason for homelessness?</b> <i>(please check only the <b>one</b> most significant reason, or write-in a custom reason below)</i> <input type="checkbox"/> Other: _____	<input type="checkbox"/> Loss of Job <input type="checkbox"/> No Affordable Housing <input type="checkbox"/> Substance Abuse <input type="checkbox"/> Underemployment/low income <input type="checkbox"/> Domestic Violence Victim <input type="checkbox"/> Health/Safety <input type="checkbox"/> Mental Health <input type="checkbox"/> Substandard Housing <input type="checkbox"/> Release From Institution <input type="checkbox"/> Doubled Up and Must Leave <input type="checkbox"/> Conflict w/ Landlord <input type="checkbox"/> Relationship Conflict <input type="checkbox"/> Criminal Activity <input type="checkbox"/> Medical Condition <input type="checkbox"/> Utility Shutoff <input type="checkbox"/> Mortgage Foreclosure <input type="checkbox"/> Loss of Child Care <input type="checkbox"/> Loss of Benefits <input type="checkbox"/> Death of Family/Friend <input type="checkbox"/> Loss of Housing Subsidy <input type="checkbox"/> Loss of Transportation <input type="checkbox"/> Declined
<b>If unsheltered, primary reason for sleeping outside vs. in a shelter?</b>	_____ _____ _____ <input type="checkbox"/> Declined
<b>Please share any comments or thoughts you have about being without housing.</b>	_____ _____

**Domestic Violence Section**

<b>Victim of Domestic Violence?</b>	<input type="checkbox"/> No	<input type="checkbox"/> Yes	<input type="checkbox"/> Declined to answer
<b>Are you currently fleeing domestic violence, dating violence, sexual assault or stalking?</b>	<input type="checkbox"/> No	<input type="checkbox"/> Yes	<input type="checkbox"/> Declined to answer

**Health Section**

<b>Do you have a permanent physical disability that limits your mobility?</b> <i>(i.e., wheelchair, amputation, unable to climb stairs, etc.)</i>	<input type="checkbox"/> No	<input type="checkbox"/> Yes	<input type="checkbox"/> Declined to answer
<b>Do you have any of the following conditions?</b> <i>(check <u>all</u> that apply; if other, please specify)</i>	<input type="checkbox"/> Physical Disability <input type="checkbox"/> Developmental <input type="checkbox"/> Mental Health Disorder <input type="checkbox"/> Substance Use Disorder <input type="checkbox"/> Chronic Health Condition <input type="checkbox"/> HIV/AIDS <input type="checkbox"/> Declined to answer <input type="checkbox"/> Other _____		
<b>What type of health insurance do you receive, if any?</b> <i>(check <u>all</u> that apply; if other, please specify)</i>	<input type="checkbox"/> None <input type="checkbox"/> Medicaid <input type="checkbox"/> Medicare <input type="checkbox"/> VA <input type="checkbox"/> Private Insurance <input type="checkbox"/> Declined to answer <input type="checkbox"/> Other _____		
<b>How do you mainly get around?</b> <i>(check <u>all</u> that apply; if other, please specify)</i>	<input type="checkbox"/> Licensed Motorized Vehicle <input type="checkbox"/> Valley Metro Bus <input type="checkbox"/> Walk <input type="checkbox"/> Ride with friends/family <input type="checkbox"/> Wheelchair/Mobility Device <input type="checkbox"/> Bicycle/Scooter <input type="checkbox"/> Declined to answer <input type="checkbox"/> Other _____		

**Household Information (Fill out one per household – used to match up household members by Head of Household)**

<b>Client is Head of Household?</b>	<input type="checkbox"/> No	<input type="checkbox"/> Yes	<input type="checkbox"/> Doesn't Know	<input type="checkbox"/> Declined to answer
<b>Name (or code) of Head of Household:</b>	_____			<input type="checkbox"/> Declined
<b>Number of adults (18+)</b> <b>in your household:</b> _____	<input type="checkbox"/> Declined	<b>Number of children</b> <b>in your household:</b> _____	<input type="checkbox"/> Declined	

**Household Composition:**

	Name (or code)	Age	Relationship
Household member 1			
Household member 2			
Household member 3			
Household member 4			
Household member 5			
Household member 6			
Household member 7			

Version 0.2 – Updated 1/16/2024